

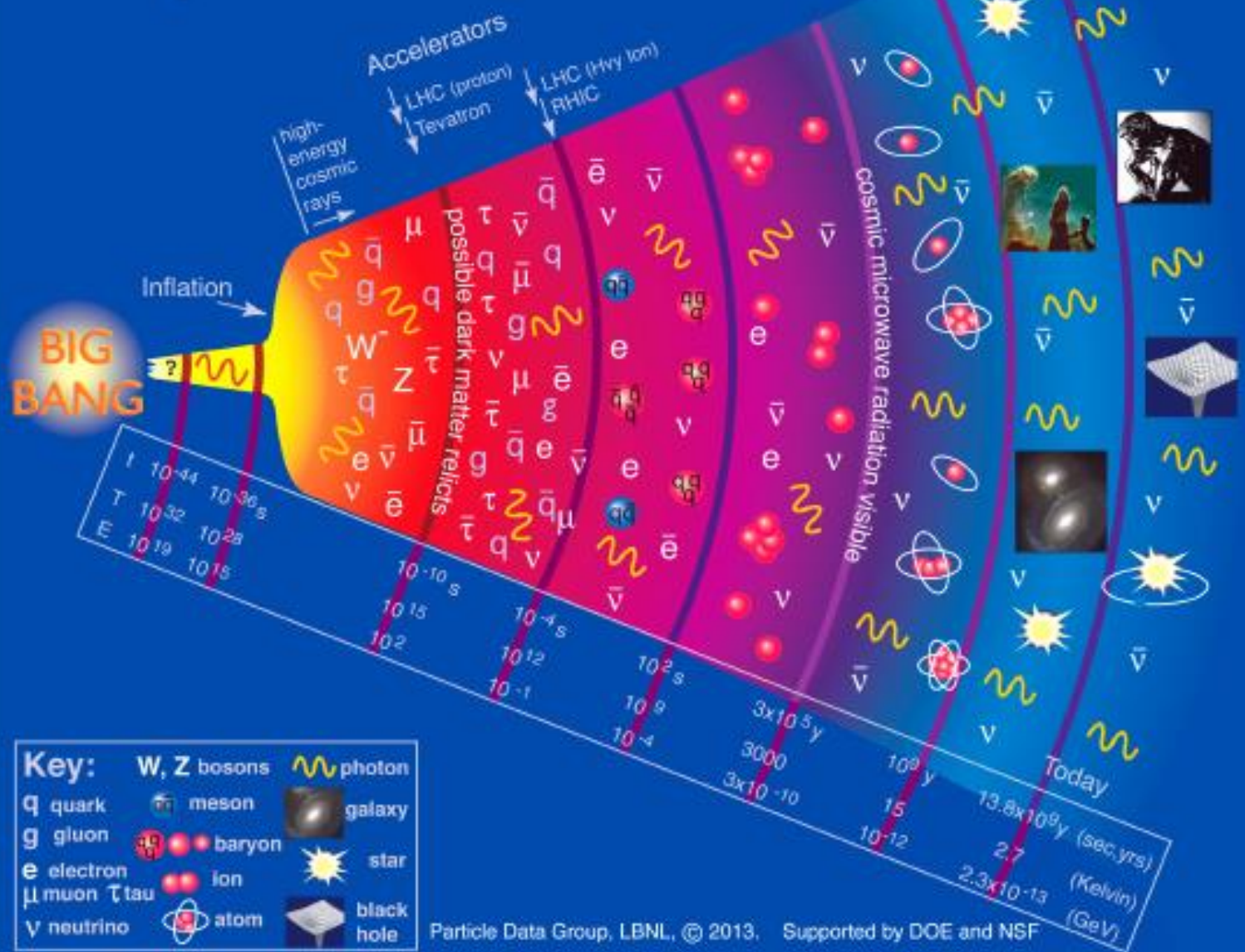
Tom Carter
cartert@cod.edu

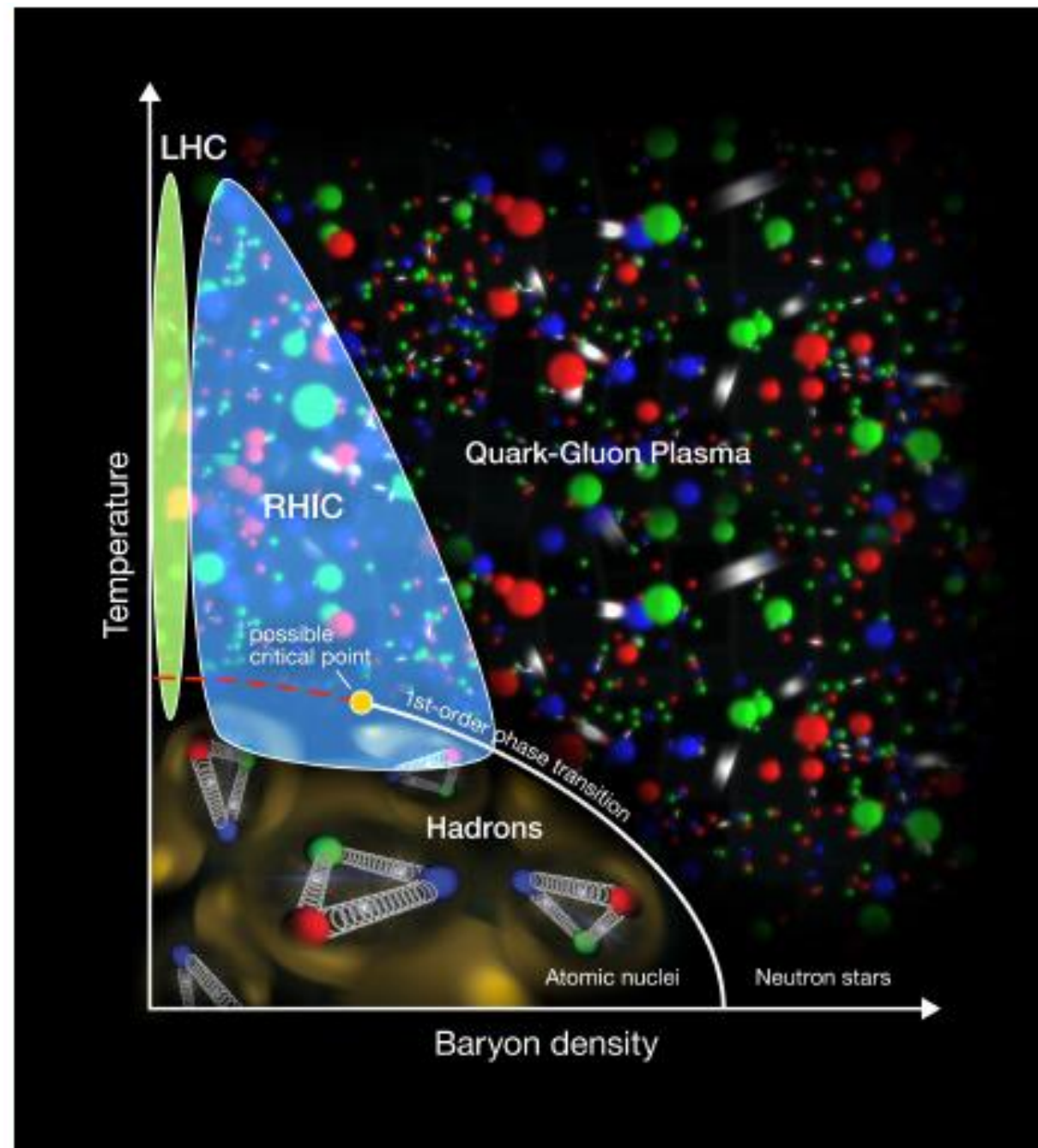
Grad School: Duke

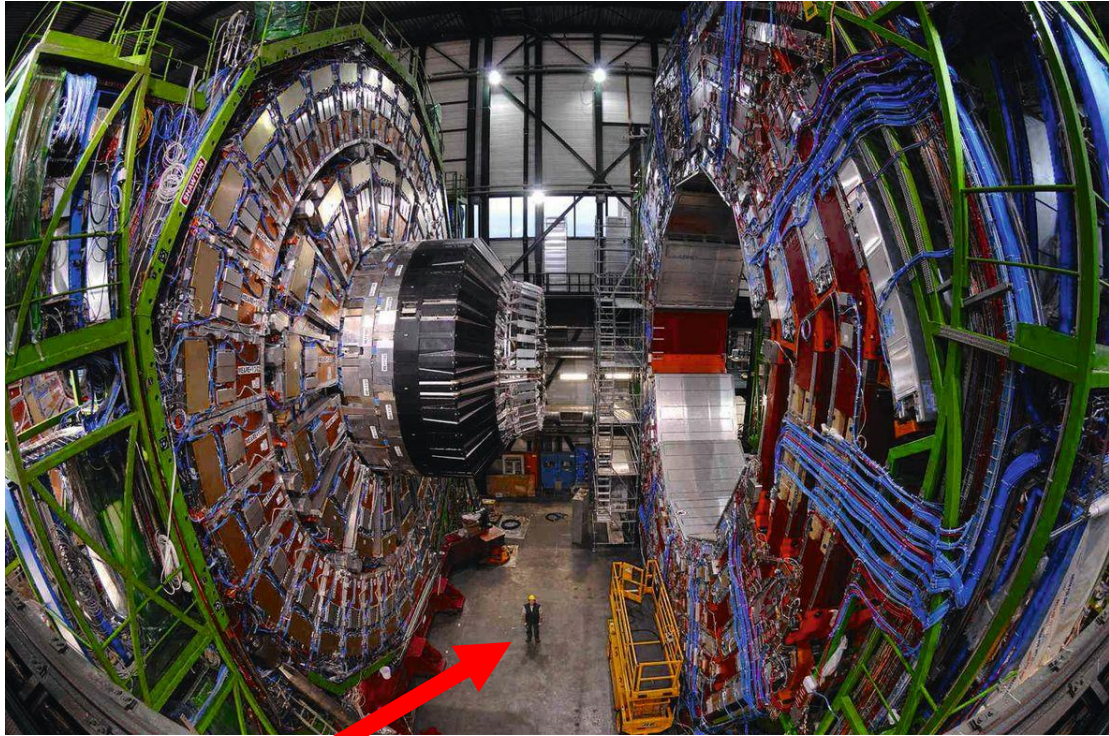
Thesis: Can Protons “melt”?

Quark – Gluon Plasma

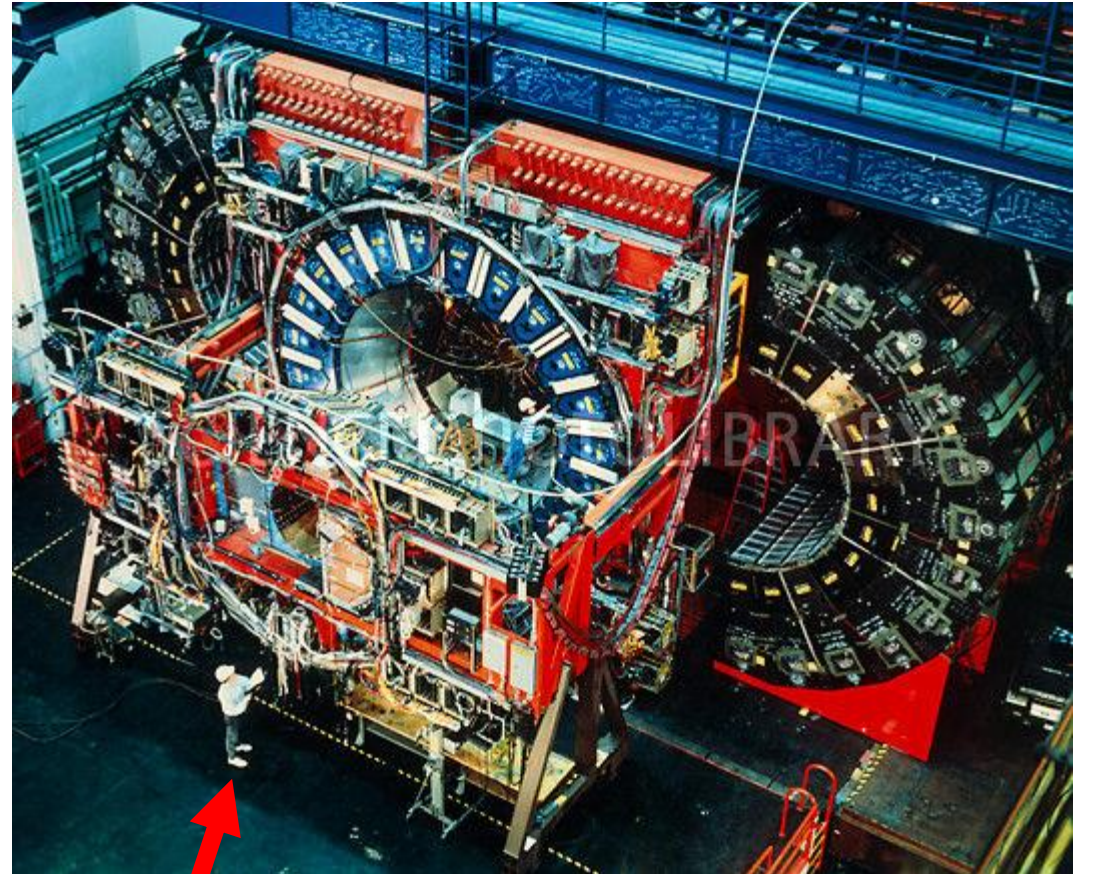
History of the Universe



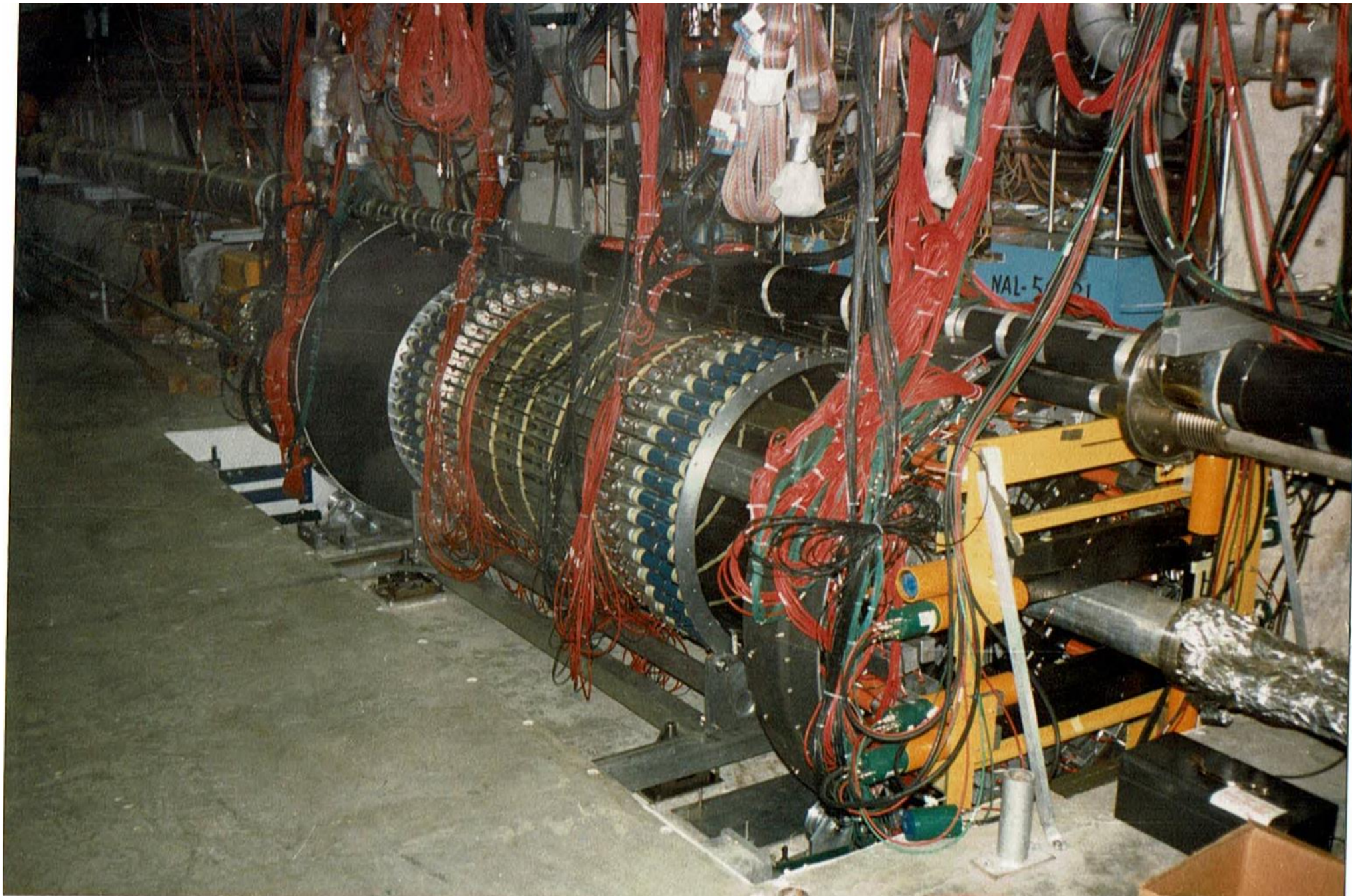


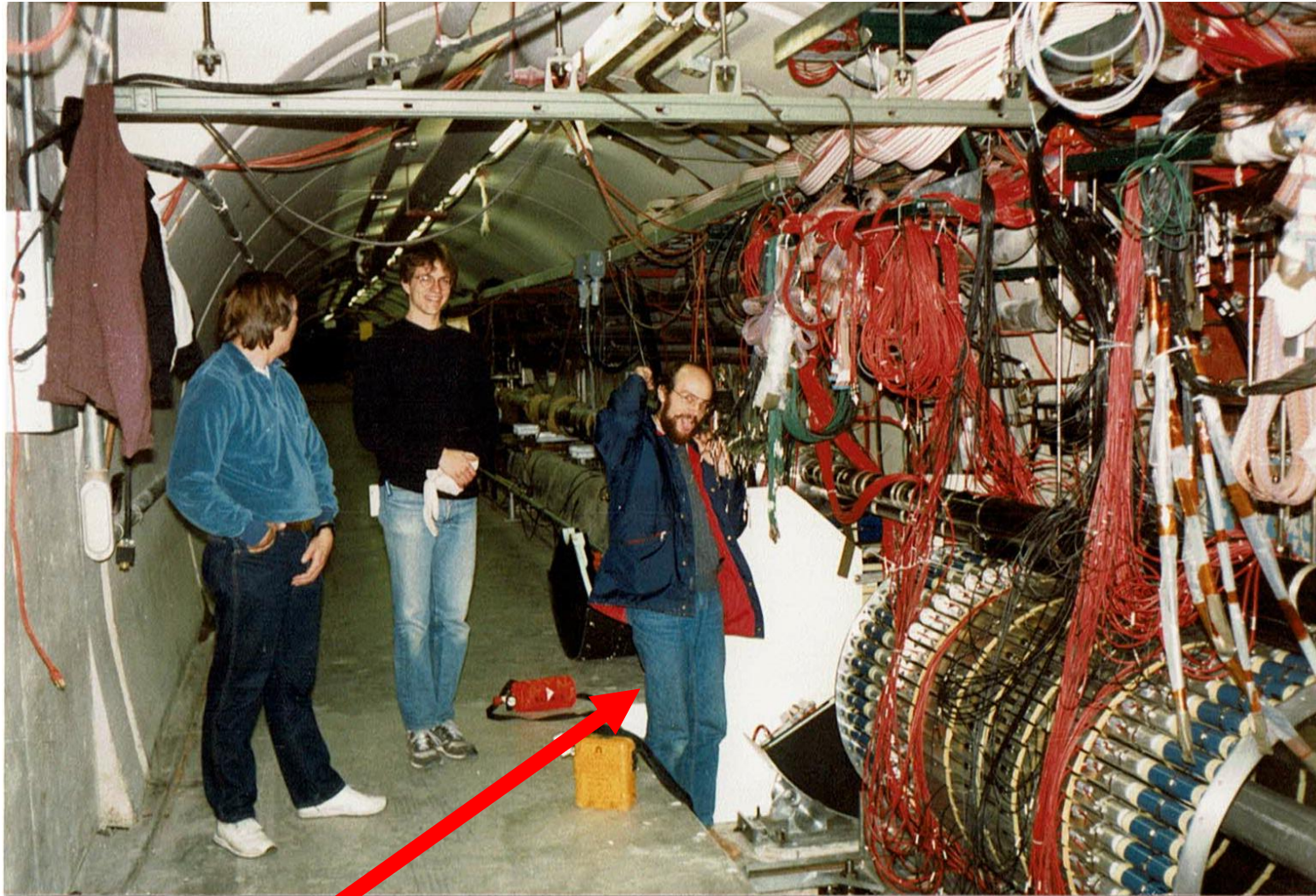


**CMS Detector
at LHC**



**CDF Detector at
Fermilab**





**E-735 Detector at
Fermilab**

Post-doc: Fermilab

1990 - 1994 – “fixed target” run

E791 – Charm quark production



42 tape drives at the rate of 9.6 Mb/s

-8mm "Exabyte" Video Tapes
- 2Gb each

HQ 96

Workshop on Heavy Quarks at Fixed Target

Rheinfels Castle, St. Goar, Germany

Oct. 3 - 6, 1996

International Advisory Committee:

J. Appel (FNAI)	F.L. Fabbri (Frascati)	J. Lee-Franzini (Frascati)
G. Bellini (Milano)	J.M. Gérard (Louvain)	L. Littenberg (BNL)
S. Bianco (Frascati)	F. Giacomino (Lecce)	S. Nagamiya (Columbia)
Ph. Blach (CERN)	W. Hofmann (Heidelberg)	L. Rossi (Genova)
A. Buras (TU Munchen)	N. Isgur (CEBAF)	V. Schmidt-Parzefall (DESY)
W. Canithers (LBU)	K. Kleinknecht (Mainz)	D. Websdale (IC London)
R. Cester (Torino)	J. Kuhn (Karlsruhe)	B. Winstein (Chicago)
B. B. Cox (Charlottesville)	L. Lemoigne (Saclay)	

Local Organizing Committee at Mainz University:

H. Blümer	B. Renk
P. Buchholz	H.G. Sander
K. Kleinknecht	F. Scheck
L. Köpke	K. Schilcher
J.G. Körner	Th. Walcher
G. Quast	

The workshop will take place at the medieval castle of Rheinfels, overlooking one of the most beautiful stretches of the Rhine river, facing the Loreley rock

Topics covered include:

Production and Decay of Heavy Quarks (Theory)
Charmed Mesons
Charmed Baryons
B-Production, Decay and Lifetimes
CP-Violation
Rare Decays

The physics of heavy quarks at colliders will be reviewed and future developments will be addressed.

Conference Secretary:

Kerstin Kern, HQ-96
Institut für Physik
Johannes Gutenberg-Universität Mainz
D-55099 MAINZ
Tel.: +49(6131)392892
Fax.: +49(6131)395169
e-mail: HQ96@ dipmza.physik.uni-mainz.de
www: <http://dipmza.physik.uni-mainz.de/~hq96/HQ96.html>
Attendance is limited:
contact Conference Secretary for information.



Sabbatical: Dark Energy Survey



What can/should
Fermilab QuarkNet do for
you?

Tom Carter
cartert@cod.edu